

ADDENDUM NO. ONE (1)
CITY OF HOSCHTON, GEORGIA
BARROW COUNTY WATER SUPPLY CONNECTION – PHASE I
ISSUED March 31, 2026

RE: BARROW COUNTY WATER SUPPLY CONNECTION – PHASE I
EMI PROJECT No. 23-028

FROM: ENGINEERING MANAGEMENT, INC.
303 SWANSON DRIVE
LAWRENCEVILLE, GA 30043
Greg Bennett, P.E.
770-962-1387

TO: PROSPECTIVE BIDDERS

This Addendum forms a part of the Contract Documents and Drawings and modifies the original bidding documents dated MARCH 2026.

The following items of the Contract Documents are modified as part of this Addendum:

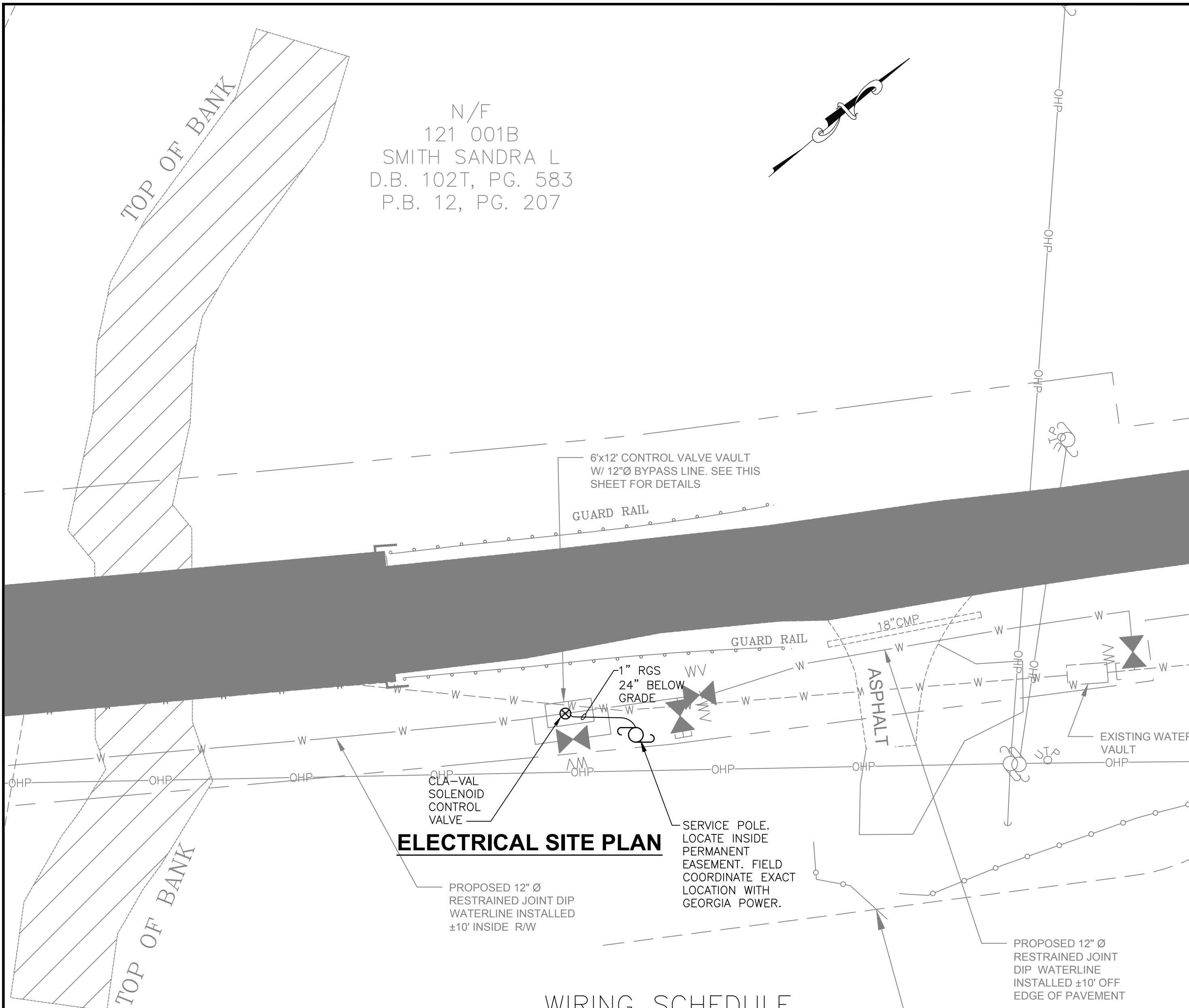
Plans

- *Plan Sheet EI has been issued and is attached.*

END OF ADDENDUM NO. 1

Z:\PROJECTS\23\23028 Hoschton Water Connection to Barrow County\Bid Phase\BP7-Released for Bids\Phase 1\ADDENDUM NO. 1\AddendumNo 1 03.31.26.doc

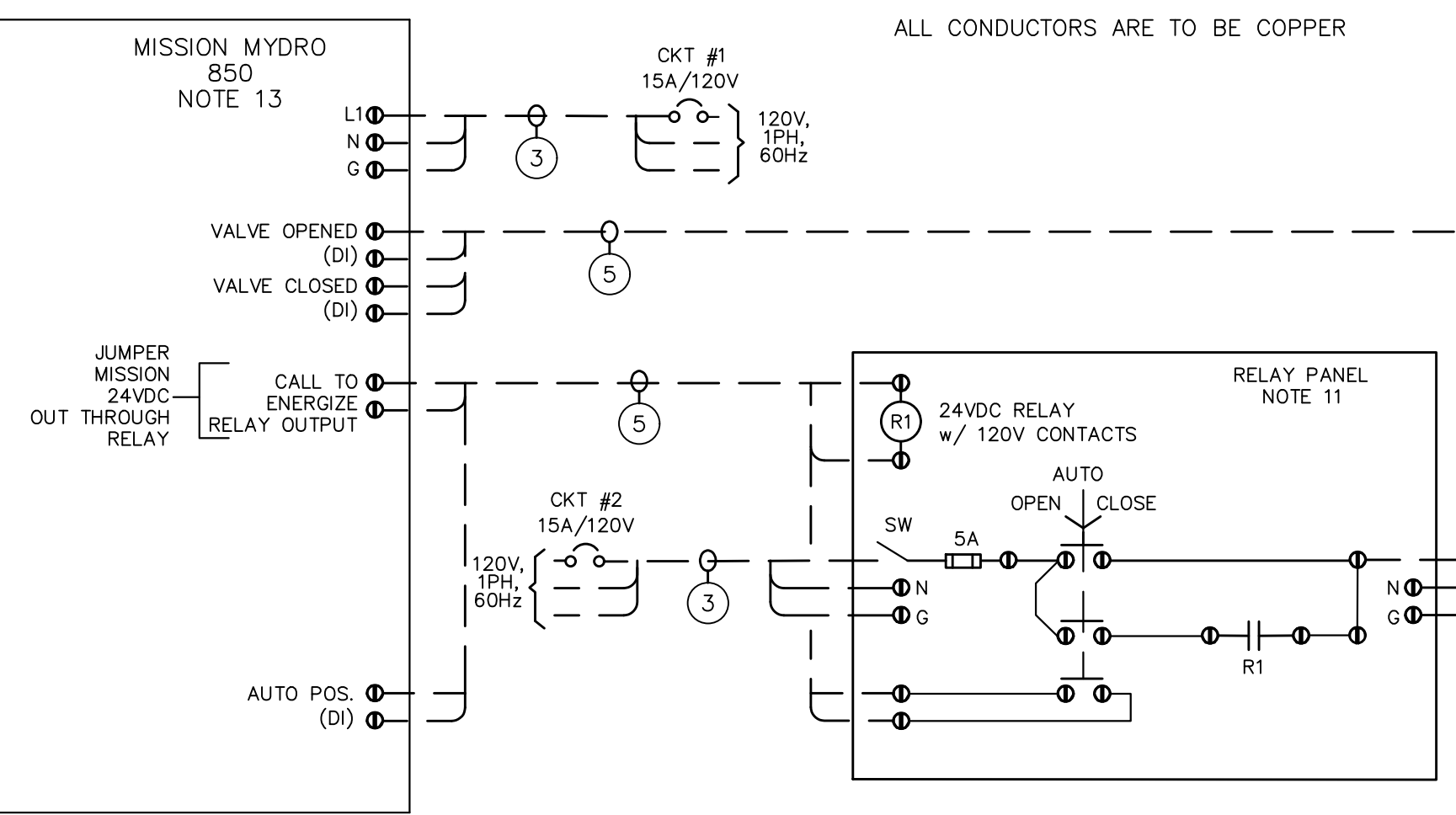
N/F
121 001B
SMITH SANDRA L
D.B. 102T, PG. 583
P.B. 12, PG. 207



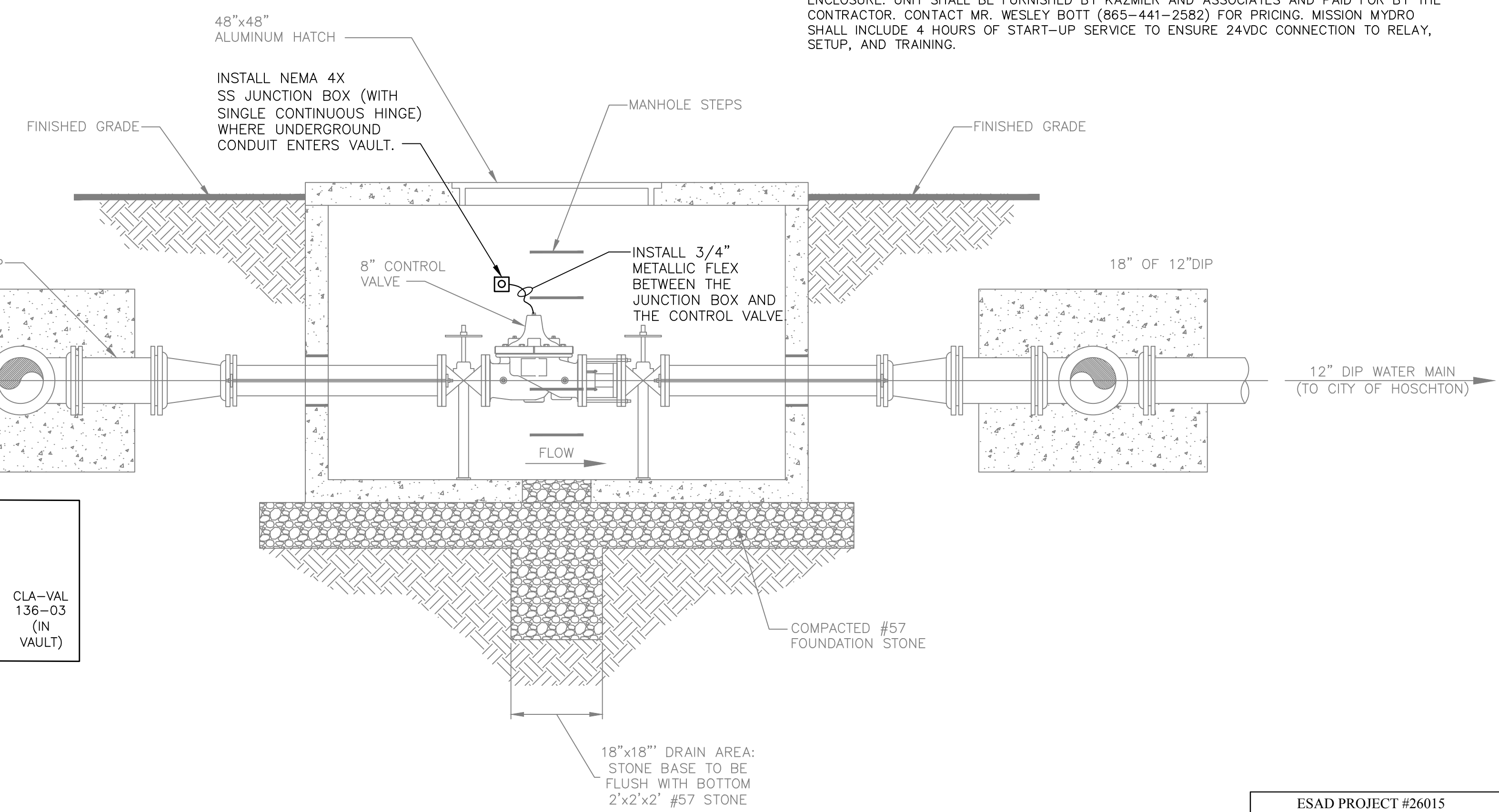
ELECTRICAL SITE PLAN

WIRING SCHEDULE

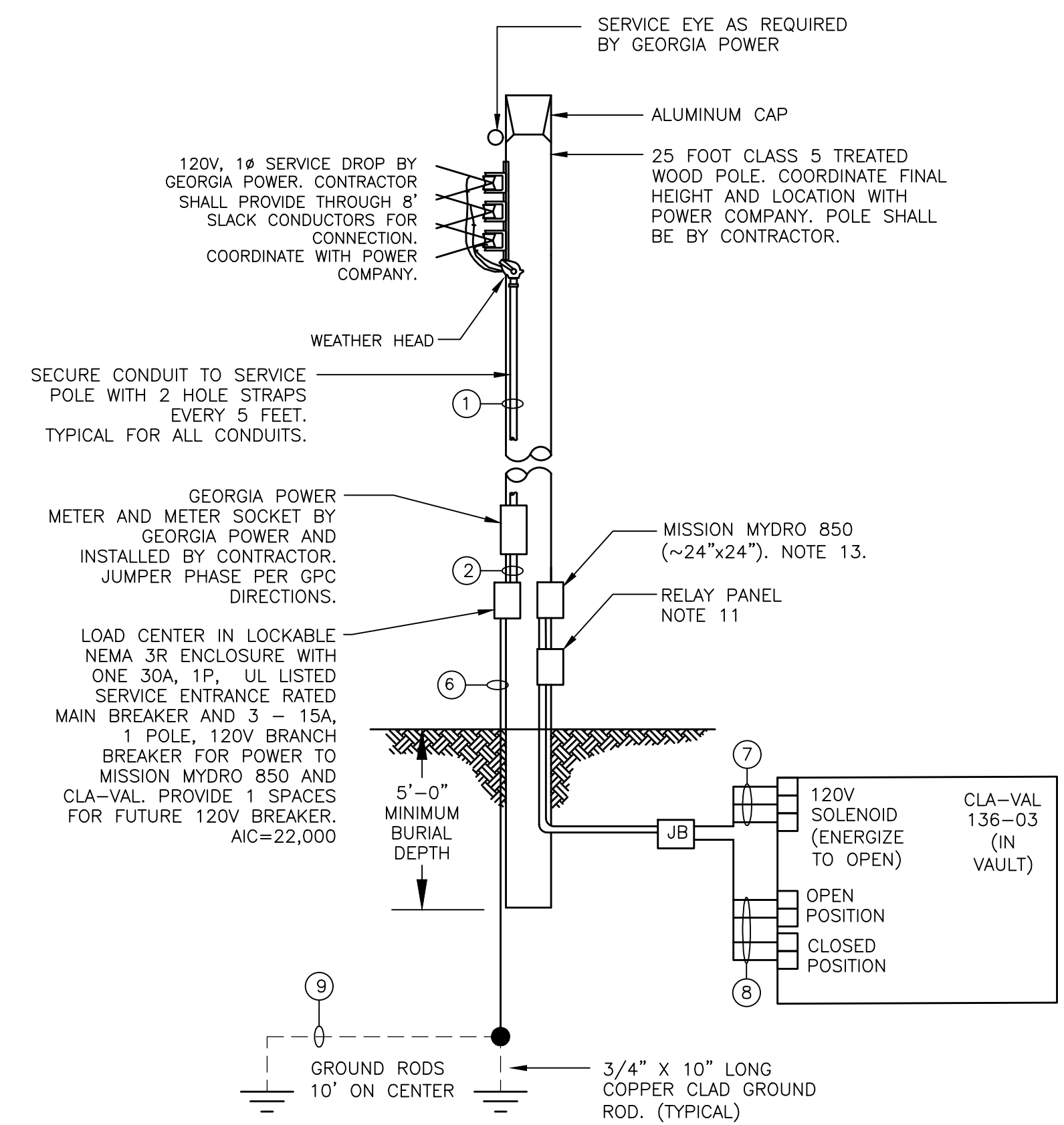
- ① 3 #8 (120V SERVICE) IN 3/4" RIGID STEEL C
 - ② 2 #8 + 1 #8G IN 3/4" RIGID STEEL C
 - ③ 2 #12 + 1 #12G 3/4" IN RIGID STEEL C
 - ④ 3 #12, 4 #14, & 4 #14 SPARE IN 1" RIGID STEEL C
 - ⑤ 4 #14 IN 3/4" C.
 - ⑥ 1 #6G IN 3/4" PVC C
 - ⑦ 2 #12 + 1 #12G IN 3/4" METALLIC FLEX
 - ⑧ 4 #14 IN 3/4" METALLIC FLEX
 - ⑨ 1 #6G
- ALL CONDUCTORS ARE TO BE COPPER



INTERCONNECTION WIRING DIAGRAM



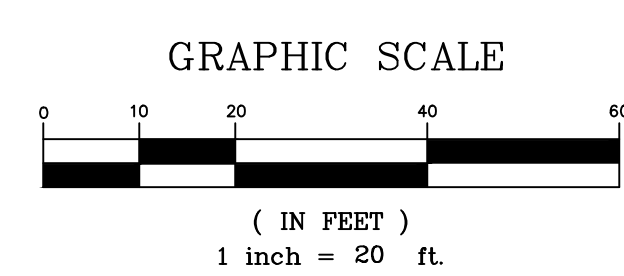
CONTROL VALVE VAULT
SCALE: 1/2" = 1'-0"



SERVICE POLE DETAIL
SCALE: NONE

ELECTRICAL NOTES AND SPECIFICATION:

1. SCOPE:
 - A. FURNISH ALL LABOR, MATERIAL, EQUIPMENT AND TOOLS REQUIRED TO COMPLETE INSTALLATION OF THE ELECTRICAL SYSTEM INCLUDING BUT NOT LIMITED TO WIRING, BOXES, LIGHT FIXTURES, PANELS, SWITCHES, RECEPTACLES, DISCONNECTS, STARTERS, AND ALL OTHER WORK INDICATED ON THE DRAWINGS OR AS SPECIFIED HEREIN.
 - B. OBTAIN ALL PERMITS, INSPECTIONS, AND APPROVALS AS REQUIRED BY THE LOCAL AUTHORITIES HAVING JURISDICTION AND DELIVER CERTIFICATE OF APPROVAL TO THE GENERAL CONTRACTOR. ALL ASSOCIATED FEES SHALL BE PAID BY THE CONTRACTOR.
 - C. ALL MATERIALS AND EQUIPMENT OF THE ELECTRICAL SYSTEM NECESSARY FOR ITS PROPER OPERATION, BUT NOT SPECIFICALLY MENTIONED OR SHOWN ON THE DRAWINGS, SHALL BE FURNISHED AND INSTALLED WITHOUT ADDITIONAL CHARGE.
 - D. WORK SHALL BE INSTALLED IN ACCORDANCE WITH THE 2023 NATIONAL ELECTRICAL CODE, THE LATEST STANDARD BUILDING CODE, AND LOCAL AUTHORITIES HAVING JURISDICTION.
2. ALL SUBSTITUTIONS FOR EQUIPMENT AND MATERIAL SHALL BE SUBMITTED TO THE ENGINEER FOR REVIEW PRIOR TO INSTALLATION. ELECTRICAL PANELS SHALL BE BY SQUARE D, GE, OR CUTLER HAMMER.
3. THE CONTRACTOR SHALL COORDINATE ALL WORK WITH ALL OTHER TRADES. IT IS THE RESPONSIBILITY OF THE CONTRACTOR TO VERIFY THE ACTUAL LOCATION OF EQUIPMENT, DUCTWORK, PIPING, ETC. AND COORDINATED THE INSTALLATION ACCORDINGLY.
4. ALL CONDUCTORS SHALL BE COPPER #12 AWG MINIMUM CONDUCTOR SIZE FOR POWER AND LIGHTING WIRING. USE #14 AWG MINIMUM CONDUCTOR FOR SIGNAL WIRING. THE INSULATION FOR THE SERVICE LATERAL CONDUCTORS SHALL BE THWN-2; ALL OTHER CONDUCTORS SHALL BE THWN-2.
5. POWER WIRES SIZES #12 AWG AND #10 AWG SHALL BE SOLID TYPE. ALL OTHER SIZES SHALL BE STRANDED.
6. ALL EXPOSED CONDUIT SHALL BE RIGID GALVANIZED STEEL, MINIMUM OF 3/4". ALL BURIED CONDUIT SHALL RIGID GALVANIZED STEEL, MINIMUM OF 1".
7. ALL FITTINGS SHALL BE CAST WITH THREADED HUBS. ALL CONNECTIONS SHALL BE COMPRESSION TYPE.
8. ALL EXTERIOR CONDUIT PENETRATIONS INTO ENCLOSURES, PANELS, METER, BREAKERS, ETC. SHALL USE MYERS WATERTIGHT HUBS.
9. CONDUIT PENETRATION THROUGH THE VALVE VAULT SHALL BE WATER TIGHT LINK SEALS.
10. ALL FLEX SHALL BE LIQUID METALLIC AND SHALL NOT EXCEED 3 FEET WITHOUT APPROVAL FROM THE ENGINEER.
11. CONTRACTOR SHALL FURNISH AND INSTALL THE RELAY PANEL. THE RELAY PANEL SHALL INCLUDE THE FOLLOWING:
 - A) NEMA 4X STAINLESS STEEL ENCLOSURE WITH SINGLE HINGED DOOR AND 3 POINT CLASP. SCREW CLAMPS NOT ACCEPTABLE.
 - B) INNER AND OUTER DOOR CONFIGURATION, LOCKABLE.
 - C) THE INNER DOOR SHALL INCLUDE OPEN-AUTO-CLOSE SELECTOR SWITCH. IN OPEN MODE, THE CLA-VAL WILL OPEN (ENERGIZE SOLENOID), IN CLOSE MODE, THE CLA-VAL WILL CLOSE (DE-ENERGIZE SOLENOID). IN AUTO MODE, THE MISSION MYDRO 850 WILL OPEN AND CLOSE THE VALVE VIA A 24VDC RELAY.
 - D) THE OPEN-AUTO-CLOSE SELECTOR SWITCH SHALL HAVE AUXILIARY CONTACTS FOR REMOTE MONITORING OF POSITION.
 - E) PROVIDE TERMINAL BLOCKS, SWITCH, FUSE
 - F) PANEL SHALL BE UL 508A RATED AND LISTED.
 - G) THE RELAY SHALL BE RATED FOR 24VDC WITH 120V CONTACTS. RELAY SHALL HAVE INDICATING LIGHTS / FLAG FOR STATE AND A TOGGLE SWITCH FOR TESTING. RELAY WILL BE ENERGIZED FROM THE ON-BOARD 24VDC POWER SUPPLY IN THE MISSION MYDRO 850. CONTRACTOR SHALL CONNECTED THE 24VDC TO RELAY OUTPUT 1 TO POWER RELAY WHEN OUTPUT IS CLOSED.
 - H) SUBMIT PANEL ELEVATION, WIRING DIAGRAM, TERMINAL BLOCK LAYOUT, ETC. DURING SHOP DRAWING FOR ENGINEER APPROVAL.
 - I) PROVIDE 2 HOUR TRAINING TO OWNER IN OPERATION OF PANEL INCLUDING RELAY TROUBLESHOOTING.
12. INSTALL METER, LOAD CENTER, RELAY PANEL, AND MISSION MYDRO 850 ON POLE. PROVIDE STAINLESS STEEL UNISTRUT FOR SUPPORT.
13. CONTRACTOR SHALL FURNISH AND INSTALL A MISSION MYDRO 850 IN NEMA 4X LOCKABLE ENCLOSURE. UNIT SHALL BE FURNISHED BY KAZMIER AND ASSOCIATES AND PAID FOR BY THE CONTRACTOR. CONTACT MR. WESLEY BOTT (865-441-2582) FOR PRICING. MISSION MYDRO SHALL INCLUDE 4 HOURS OF START-UP SERVICE TO ENSURE 24VDC CONNECTION TO RELAY, SETUP, AND TRAINING.



1989
ENGINEERING AND ARCHITECTURE, INC.
ALL RIGHTS RESERVED.
THESE CONSTRUCTION DOCUMENTS AND ANY INSTRUMENTS OF SERVICE HEREAFTER PREPARED BY THE ENGINEER OR ARCHITECT ARE THE PROPERTY OF THE ENGINEER OR ARCHITECT. NO PART OF THESE DOCUMENTS SHALL BE REPRODUCED OR TRANSMITTED IN ANY FORM OR BY ANY MEANS, ELECTRONIC OR MECHANICAL, WITHOUT THE WRITTEN PERMISSION OF THE ENGINEER OR ARCHITECT. THE CONTRACTOR SHALL BE RESPONSIBLE FOR OBTAINING ALL NECESSARY PERMITS AND APPROVALS FROM THE LOCAL AUTHORITIES HAVING JURISDICTION. THE CONTRACTOR SHALL BE RESPONSIBLE FOR OBTAINING ALL NECESSARY PERMITS AND APPROVALS FROM THE LOCAL AUTHORITIES HAVING JURISDICTION. THE CONTRACTOR SHALL BE RESPONSIBLE FOR OBTAINING ALL NECESSARY PERMITS AND APPROVALS FROM THE LOCAL AUTHORITIES HAVING JURISDICTION.

DATE	NO.	DESCRIPTION
03/26/2026	A	ISSUED FOR BID
03/21/2026	B	ADDENDUM NO. 1: ELECTRICAL PLAN ISSUED

ENGINEERING MANAGEMENT
Civil and Environmental Engineers
303 Swanson Drive, Lawrenceville, GA 30043
phone: 770-962-1387 fax: 770-962-8010
www.emmc.biz

BARROW COUNTY WATER SUPPLY CONNECTION - PHASE I FOR THE CITY OF HOSCHTON JACKSON COUNTY, GEORGIA

ELECTRICAL	DMZ	AVK	DMZ
SHEET TITLE		DRAWN BY	
DESIGN BY		CHECKED BY	

STAMP
No. 38080
PROFESSIONAL
3/18/26
DAVID M. ZIMMER
ENGINEER

ESAD PROJECT #26015

03/26/2026
DATE

23028
JOB NUMBER

E1

ESAD, LLC
2300 LAKE PARK DRIVE
SUITE 250
SMYRNA, GA 30080
PH: 678-469-5196

PATH & FILE: E:\ESAD, LLC\Projects\26015 Control Valve Vault - Electrical

REVISION

SHEET